



TALKING TURKEY

MONTHLY NEWSLETTER OF THE WAGSTAFFE TO KILLCARE COMMUNITY ASSOCIATION

No 176 November 2017

**NEXT
WTKCA MEETING
will be held on
Monday
13 November, at
Wagstaffe Hall
Meeting followed by
supper
All Welcome!**

NOVEMBER at WAGSTAFFE HALL

*MONDAY

9.30-11.00 Yoga Gai 4360 1854

6.00 – 7.00pm Pilates Michelle
43845005 / Simon 0425 224 532

WTKCA Meeting 13 November
7.30 pm

*TUESDAY

9.15-10.15 Clinical Pilates with Jo
Frize – booking/term 4360 2707

11-12.15pm Movement & Mind-
fulness – Jacqui Dawson 0408
602 669

1.30-4pm Knit 2 Chat 2 - 2nd &
4th Tuesdays Helen 4360 2926

6.00 – 7.15pm Iyengar Yoga –
Robyn 0449164769

*WEDNESDAY

10.00-11.00 Meditation (Adults)
Colette 0408 612 065 (in recess)

6.00-7.00 pm Clinical Pilates with
Jo Frize – Booking/term 4360 2707

*THURSDAY

9.15-10.15 Clinical Pilates – with
Jo Frize – booking/term 4360 2707

2.00-5.00 pm Mahjong - Heather
4360 2178

*FRIDAY

9.30-11.am Yoga with Laurie
Jones 0423 589 877

1.30-4.30pm Old Wags Bridge
Group Ann 4368 2003

For bookings call 0490 403 822

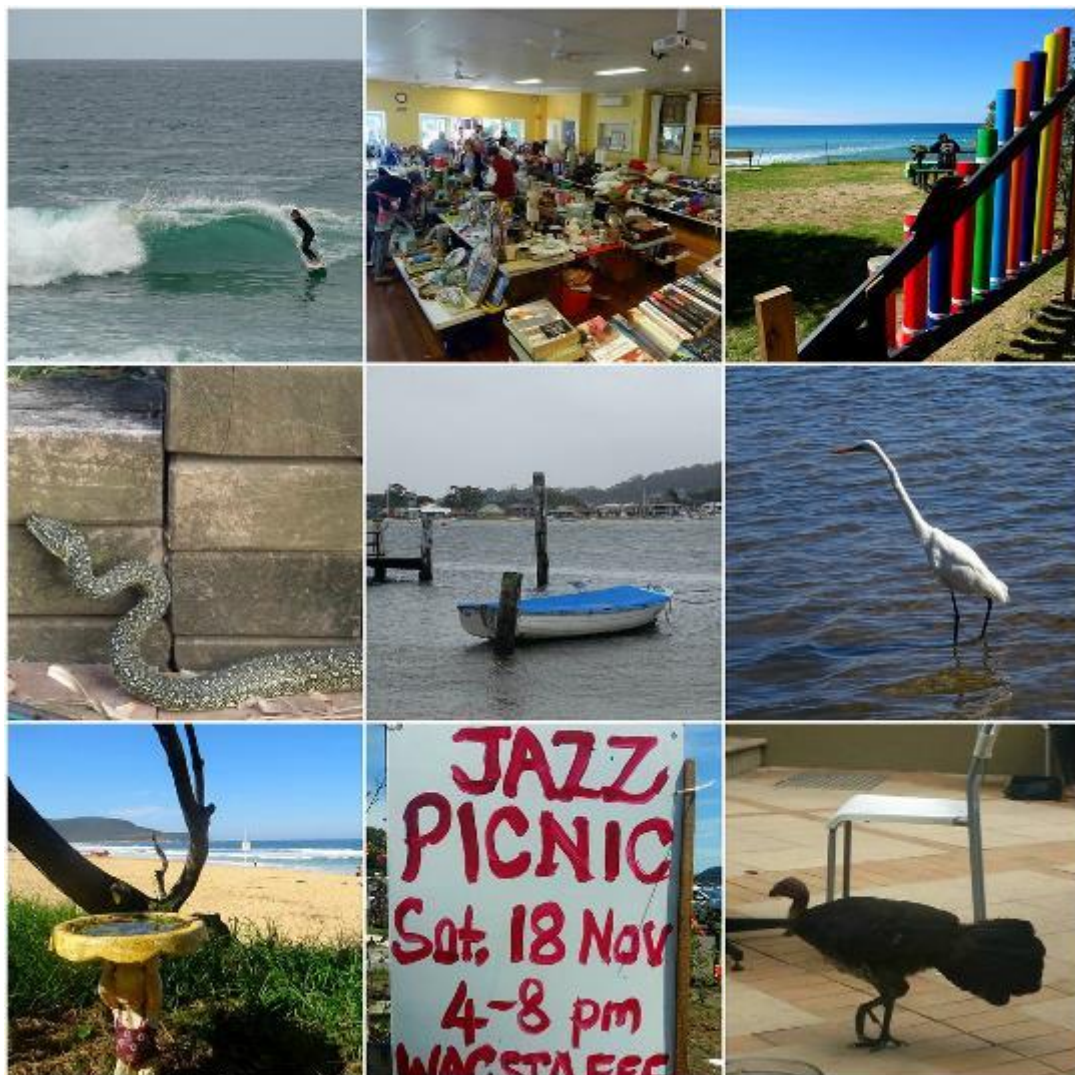
MUSINGS FROM THE PRESIDENT'S DESK....

People are getting active in the run-up to summer. The Pretty Beach P&C is kicking up its heels at its 90th anniversary Gala Night at the Surf Club on 11 November (see Page 2), the RFS is reminding us to get ready for the bushfire season, and there will be a Jazz Picnic at Wagstaffe on Saturday 18 November (See Page 2). Meanwhile, the soccer net at Turo Park is being well used, and we're all looking forward to our fitness equipment being installed there! Tennis players are out in force, together with that steady band of tennis court sweepers led by Bob Eddington, and the rest of us try to keep up with all the walking, bushcare, book groups, writers, artists, carvers, singers and sculptors.

All the community groups here offer us much to feed our mind and body, and the Wagstaffe Hall, Community Church and Surf Club act as venues for these activities. And the Bouddi Society with its Arts Foundation will be looking after our cultural life and presenting its 2017 awards at the Hall on 19 November at 1400 hours.

So there is much to do to ensure that a spirit of tolerance and cooperation continues, and that we maintain the things about this area that attract us all to it: working productively, enjoying our lives, looking after future generations, conserving the environment, and enjoying the activities that individuals and groups initiate for us.

Peta Colebatch



**REPAIRS AT THE PRETTY BEACH WHARF*****Killy Cares impacting our community***

As our very own local charity, Killy Cares is gaining some momentum in being of service to people in need in our local community.

On Friday 20 October, Killy Cares Annual Fundraising Dinner was attended by 90 very generous people. Some of the proceeds this year are assisting a young couple facing very difficult times with cancer. Behind the scenes, Killy Cares is supporting other locals through meals and personal care that volunteers provide.

Our next event is another First Aid Training session, which Killy Cares is hosting – to further build capacity in our community to manage emergencies. This session on 15 November is already booked out.

Everyone is invited to our Christmas Drinks Social, to be held on the Hardys Bay waterfront on Thurs 30 November, 5.30-7.30pm. Bring the whole family and friends. BYO drinks and nibbles, and enjoy some live entertainment.

For information, contact details if you know someone in need, and to join our team of volunteers:

www.killycares.org

**JAZZ PICNIC on the Grass by the Bay
at WAGSTAFFE HALL**

**SATURDAY
18 NOVEMBER
4 – 8 PM**

**Swing into summer with
All Stars from the
U-Bouddi Big Band!**

**Bring your rugs, chairs, drinks and picnic
for a late afternoon of jazz and summer
seduction.**

**Put on your dancing shoes - or kick back
and watch the stars come out.**

**Attendance at this community event is free
but donations will be requested to defray
the costs of organising the event.**

PLEASE JOIN US!

YOU ARE INVITED TO THE
PRETTY BEACH PUBLIC SCHOOL
90TH
ANNIVERSARY
GALA NIGHT
1920'S THEME
LIVE JAZZ
SATURDAY 11TH NOVEMBER, FROM 7PM
KILLCARE BEACH SURF CLUB
CATERED EVENT WITH A DRINK ON ARRIVAL
Tickets \$45 at Wagstaffe Store

FEEDING BIRDS IS A VERY BAD IDEA

**It is the equivalent of giving them
McDonalds - yes, junk-food! To find out
why, go to:-**

www.birdsinbackyards.net/Feed-or-Not-Feed

CATS IN THE NATIONAL PARK

Local residents have noticed that some householders are letting cats out at night, to roam in the area. As we are fortunate to be in the middle of a National Park, we have a responsibility to ensure that wildlife are protected from the predations of domestic animals, especially cats, who are estimated to kill tens of millions of native animals each night in Australia (not all, of course, in Wagstaffe!) However, each domestic cat allowed out at night is estimated to kill about 30 prey a year!



OUR LOCAL TALENT:

JULIE DOLAN – FIFA Player of the Century



Julie Dolan is one of those who have been fortunate enough – and wise enough – to have created a career out of something they really enjoy. In Julie's case, it has been sport in general, and soccer in particular. It has always been fun for her, and when she discovered she had a talent for the sport, her career took off.

Julie comes from a sporting family – her mother was a champion diver, with acknowledgement in the Tamworth Hall of Fame. Her father was an AFL player, and all her five siblings were involved in sporting activities. At age 14, she was introduced to soccer almost accidentally when a friend took her to play a game – a talent scout watched her play and advised her to concentrate on the game from

then on. Her family was wholly supportive, and she was soon involved in School, District, Club, Representative, State and National teams. It was challenging, inspiring and above all, fun.

However, it was not lucrative. Women's teams at that time had to raise their own finances for interstate and overseas competitions – a lot of raffles, stalls, and selling cakes, to get enough together to compete. Men's teams were sponsored and often subsidised by the Government. Julie did Office Management work in between tournaments, to provide a living.

In the early 1970s, the Australian Women's Soccer Team was established; later to become "The Matildas". Julie captained the team for the first 10 years of its existence. She was the Australian and State representative from 1974 to 1989, and State Captain from 1977 to 1986, playing in Centre mid-field. Among the international soccer tournaments during that time, she captained the 1st Australian International Test in 1979; the International Test Series in New Zealand in 1980; the 1st Oceania Cup in 1983, in Noumea; the Xian International Tournament in China in 1984; the International Tournament in Taipei in 1984 and the Pilot World Cup in China in 1989. She also completed the first Sports Science degree at the Southern Cross University, which led to her lecturing and coaching in Japan at the Kan-to-Gakuin University.

In 1999, she was awarded the Inaugural Australian Soccer Hall of Fame "Medal of Excellence"; in 2000, she won the Queen Elizabeth II Australian Sports Medal; and in 2004, she became the Inaugural Ambassador, Under 15s Australian Representative Team. Since 2007, she is entitled to wear the Australian Baggy Green Cap No 1.

However, for Julie, three events stand out as being highlights of her career: in 1998, she was acknowledged as FIFA Player of the Century, Australia and Oceania Region Women's Soccer; also in 1998, in recognition of her extraordinary talent, outstanding career and contribution to the sport, a medal was awarded for the first time by the Football Federation of Australia, named *The Julie Dolan Medal*, and is now awarded annually; and the establishment of the *Dolan Warren Award*, given at Award Night, the pinnacle of the soccer year, to the most outstanding player of the year.

Julie now works as Administrator and Coach at the International Football School, at Kariong, where her aim is to instil in aspiring young players the ideals of fitness, commitment and attitude that will help them become champions, as she is!!

WTKCA

Pretty Beach

Community Preschool

is finalising enrolments for 2018 and has limited vacancies still available. If you are interested in finding out more, please contact the office on

4360 1355

or visit the preschool website to enrol online:

www.prettybeachpreschool.com.au

BOUDDI PHOTOS FLICKR

The Bouddi Collection of Photographs that began with the History Project launched by the Bouddi Society in 2007 is now readily available online. Simply search '[Bouddi Photos Flickr](#)' and choose '[Albums](#)' and there you will find more than 2000 photos reflecting our past and modern history and many family collections as well.

Details of this photo are needed. Can you help?



Please contact Robyn – 0416 069 311

**HARDYS BAY CLUB**

Friday, Nov. 3, 7.45pm –
Ollie Brown

Sunday, Nov. 5, 2pm – Blues Jam

Tuesday, Nov. 7, 12pm on –
Melbourne Cup Lunch

Saturday, Nov. 11, 7.30 –
Ben Woodham

Sunday, Nov. 12, 2- 5pm – Jam : Top
Cat

Saturday, Nov. 18, 7.30 –
Buck Blues Band

Sunday, Nov. 19, 3 – 6pm – Deck
Sessions: Little Quirks

Friday, Nov. 24, 8pm – Tim Rogers

Sunday, Nov. 26, 3 – 6 pm
Royal River Rats

For more information:

www.hardysbayclub.com.au/art

WTKCA CONTACTS

President:
Peta Colebatch

Vice President:
Alex Sharp

Secretary:
Ian Bull - 0419 833 945
sec@wagstaffetokillcare.org.au

Treasurer:
Brent Walker

Membership Secretary:
Bruce Fraser

Hall Bookings: 0490 403 822
hall@wagstaffetokillcare.org.au

Public Officer: Fay Gunther

Newsletter: Alex Sharp
tt@wagstaffetokillcare.org.au

(Please note: PDFs not reliable for TT)
www.wagstaffetokillcare.org.au

**Saturday November 4th
& Sunday November 5th
11am to 5pm**

Visit over 20 Central Coast Artists' studios and observe the artists' work in a variety of 2 and 3 dimensional media.

The 5 Lands Art Studios brings art to the community by providing a unique opportunity to bring artists and art lovers together. We have painters, sculptors, textile artists, printers and teachers to mention a few.

Please check our website for details.

www.5landsartstudios.com/

**November at HBCC**

Our new series :

How a 2,000 year old letter can be so relevant.

AGM: Sunday 5th November: Annual General Meeting of HBCC

Special event: Sunday 12th November: Relaxing over lunch

Regular mid-week activities continue

For seniors – Friday Friendship, each week from 10.30-12noon: Conversations over a cuppa, activities and outings

Advanced Notice: Neighbourhood Christmas Celebration Saturday 2nd December

Carols on Waterfront Saturday 23rd December

For enquiries, hall hire and pastoral support, please phone Pastor, Dr Stephen Hinks – 0439 744 657

RIDING BIKES ON THE DOG TRACK

Bike riders, particularly school children, are asked to slow down when riding along the Dog Track. Many walkers are unable to hear the bikes coming – maybe riders could ring their bells when coming up behind walkers?

MOBILE LIBRARY

The Gosford City Library's Mobile Library Van visits Wagstaffe fortnightly on Wednesdays!

This month: November 8 and 22

How to remember which day?
It follows the YELLOW

NEIGHBOURHOOD CHRISTMAS CELEBRATION

Hardys Bay Community Church, invites neighbours and friends to

a **Christmas Street Party** on
Saturday 2nd December

on the waterfront Araluen Drive at
5.00pm – 7.00pm

Bring your preferred drinks and we will provide scrumptious nibbles and punch

ALL WELCOME

BECOME A MEMBER

The Association has a proud history of promoting everything good about the unique character of the Bouddi Peninsula – the environment, the village character and the sense of community. Please consider joining us by completing the form below. (Note: Current Members will be advised when renewals are due). Form is for one New Member only: By signing this form you agree to uphold the Association's Aims and Objectives [find at www.wagstaffetokillcare.org.au or contact WTKCA for a copy or further information].

(1) Complete this form (2) Enclose payment of \$5p.p. [includes joining fee] (3) List details in spaces provided (4) Sign this form and return to WTKCA Membership Secretary, PO Box 4069 WAGSTAFFE NSW 2257.

FULL NAME of new member /s [use BLOCK letters].....

Local & mailing addresses.....

Email address.....

Signed

Phone/s..... Signed.....