



# TALKING TURKEY

MONTHLY NEWSLETTER OF THE WAGSTAFFE TO KILLCARE COMMUNITY ASSOCIATION INC

No 171 June 2017

Please note!  
There will be no  
meeting in June  
**NEXT**  
**WTKCA MEETING**  
will be held on  
**Monday**  
**10 July, 7.30pm**  
**at Wagstaffe Hall**  
**Meeting followed by**  
**supper**  
**All Welcome!**

## JUNE AT WAGSTAFFE HALL

For bookings call 0490 403 822

### \*MONDAY

9.30-11.00 Yoga with Gai 4360 1854  
2-3pm Private rehearsal

6.00-7.00pm Pilates Michelle  
43845005 / Simon 0425 224 532

### \*TUESDAY

9.15-10.15 Clinical Pilates with Jo  
Frize – booking/term 4360 2707

11-12.15pm Movement & Mindfulness – Jacqui Dawson 0408 602 669

1.30-4pm Knit 2 Chat 2 - 2nd & 4th  
Tuesdays Helen 4360 2926

6.00-7.15pm Iyengar Yoga -  
Robyn 0449 164 769

### \*WEDNESDAY

10.00-11.00 Meditation (Adults) -  
Colette 0408 612 065

6.00-7.00 pm Clinical Pilates with  
Jo Frize – Booking/term 4360 2707

### \*THURSDAY

9.15-10.15 Clinical Pilates – with Jo  
Frize – booking/term 4360 2707

2.00-5.00 pm Mahjong - Heather  
4360 2178

### \*FRIDAY

9.30-11.am Yoga with Laurie Jones  
0423 589 877

1.30-4.30pm Old Wags Bridge  
Group - Ann 4368 2003

## THE PRESIDENT'S REPORT

Following the AGM on May 8 here is the Summary of the President's Report

The years keep rolling by, and we roll with it. But some things stay the same: our great environment, and all those wonderful people who rally round and support our key events (Australia Day and Trash and Treasure), and who carry out all the myriad of activities that are needed to maintain the Hall, the tennis courts, keep our newsletter and website going, look after the environment, remind us of things to be done, and who help us all make it the great place it is in which to live.

So thank you to everyone who helps and rallies round, whether supporting our Association or the other community groups, and particular thanks to all the members of the WTKCA Committee who in turn rally round when one of us is away, and who all use their skills to work with others.

We had some challenges this last year: the new Council lease for Wagstaffe Hall, the Council amalgamation, the damage to the tennis courts area with damage to the fences, the gate to the children's play area and the shade cloth. And then we had the case of the disappearing green cloth used at the end of the tennis courts. But despite the disappointment that all this caused to the volunteers, all has been repaired and replaced, and life continues, we hope without further damage!

Our long rolling projects continue, as nothing goes smoothly, but numerous improvements were made to the Wagstaffe Hall and its surrounds, memorial seats were erected on the dog track, and the carvers continue to do their marvellous work and we look forward to a new table and seats in this calendar year. We are continuing to work with other community groups, and are hoping that we will be able to bring the fitness project to fruition, while more work is still needed in the Turo Park extension; sculptures will need to be created, and we continue to liaise with National Parks on the Half Tide Rocks track. Great investigations were carried out on the mobile black spots, and everyone was kept busy with normal maintenance.

So thank you to everyone, and we look forward to ongoing discussions about sharing our great environment, welcoming all, and maintaining a friendly community.

Peta Colebatch – President

## Hardys Bay Foreshore Renewal Proposal

An imaginative design proposal to reinvigorate the foreshore of Hardys Bay has been developed by local highly experienced and community minded landscape architects together with local residents.

Community groups:- WTKCA, Killcare Wagstaffe Trust, Hardys Bay Residents Group together with Central Coast Council support progressing the proposal. We will all have input and we are now seeking input from YOU.

The concept design brings into focus its bay-side setting through themes of identity and connection.

Please see more information overleaf (Page 2)

## NBN Countdown - Telstra Switching Off - August 1st

The countdown to Telstra turning off their landline service is nearing its end.

If you want landline continuity you need to act NOW.

Contact one of the many NBN service providers and get the process rolling.



from page 1

## Hardys Bay Waterfront Renewal Proposal



Celebrating the region's beach and bay culture, the foreshore and Yum Yum tree special place has the potential to become a vibrant node within the Peninsula region providing new pathways, foreshore access and planted with new vegetation.

The site beneath the Yum Yum trees (*Erythrina* spp.) beside the public wharf is highly valued by the community as a gathering place and the design proposes to renew this area with paving, planning, furniture and pathway connections to both the foreshore and the bus stop. Connecting Wagstaffe to Hardy's Bay along a continuous foreshore walk through simple clarity of space and accessibility was an essential component of the concept. Access to Brisbane Water is provided at multiple points along the bay with the design drawing on the robust coastal vernacular of the region with local sandstone, timber detailing and indigenous species. The site is envisioned with shared pathways, green open space, indigenous trees and shrub plantings and the restoration of mangrove habitat. Sandstone steps provide people with access to the water, opportunities for play and invites local ecologies to take up residence amongst the thoughtfully placed blocks. Indigenous trees are proposed to be situated throughout the area with careful consideration of the views from the properties that overlook the bay, providing amenity for the foreshore users and habitat for local wildlife.

The renewal of this site will provide the community with an open and inviting foreshore place that can be used for gathering and events, celebrating this place as the setting of some of our fondest memories.

Detailed plans can be viewed and commented at website: [sites.google.com/view/hardysbayforeshore/](https://sites.google.com/view/hardysbayforeshore/) and you are urged to do just that. Cut-off date for comment is 15 August. Plans will be refined in the light of input received.





## MOBILE BLACK SPOTS UPDATE

We received advice in April from federal member for Robertson, Lucy Wicks that Minister for Regional Development & Communications, the Hon Fiona Nash has advised that:-

*"Under Round 3 of the Government's \$220 million Mobile Black Spot Program, carriers will be invited to bid for funding to provide improved mobile coverage to identified priority locations, including Killcare. A competitive process to allocate round 3 funding is expected to commence this year."*

We understand 'Killcare' to mean the four black spots identified in our survey of the Killcare to Wagstaffe area conducted early this year.

The wheels turn slowly so we are not holding our breath but we have been assured they ARE turning. We will keep you posted.

Ian Bull

## KILLY CARES OFFERS

### "CARING FOR FAMILIES"

#### FIRST AID TRAINING

Following the success of the two community-based CPR training courses funded by Killy Cares in 2017, "Caring For Families" is a St John First Aid Course being offered to families in our community. The content of this half-day course is designed to equip parent/carers and grandparents with the knowledge to manage basic, everyday first aid situations specific to young children.

The course content includes: resuscitation on an infant and child (overview) and basic management of choking, bleeding, poisoning, wounds, burns, bites, stings and shock – so it is also relevant to most people in our community. It will be held at the Hardy's Bay Community Church on Tuesday 14 June from 9.30am -1.00pm.

If interested in attending, please contact  
Jenni Bouchier on 0411 198 483  
or [killycares@gmail.com](mailto:killycares@gmail.com)

## SAVE THE DATE

\*\*\* SATURDAY 2 SEPTEMBER 2017 \*\*\*

### *The School's Birthday Party*

Join members of our community, past and present, as we celebrate 90 years of Pretty Beach Public School.

Come in your most flamboyant 1920s fancy dress in honour of the school's opening in 1927.

This community event will be held at the Killcare Surf Club on the night of Saturday 2nd September

Tickets will be on sale shortly

To register your interest in this event and to be notified when tickets go on sale, please email

[prettybeach.p.c@gmail.com](mailto:prettybeach.p.c@gmail.com)

We look forward to a night to remember!

## 'Our Colleen'

Dear Community

Please accept my overwhelming thanks for the kindness and thoughts following the recent passing of my mother, Colleen Smith.

During her stay in care Colleen remained connected to the best part of the Central Coast community (Bouddi Peninsula!) through the generosity of the people who sent her a steady stream of letters, cards, photos, leaflets, news items and of course 'The Turkey' which gave her great comfort plus a chance to reflect regularly on a life of both determination and "progress" coupled with a zest for local history essentially based on personal relationships and a remarkable memory.

Once again my thanks  
Michael Hopkins

Michael added to his letter of thanks a note that said he had received condolences from many countries including USA, Switzerland, Germany, France, Austria, Spain, Morocco and Belgium, mostly from people wearing her knitted bed socks, beanies or scarves to this day and also from others whose children received babies clothes knitted by Colleen.



## To our valued Tennis players

The issue of an increase in the hourly tennis court hire has recently be raised with the WTKCA committee.

It has been suggested that the hourly fee might be raised to \$8 or \$10 per hour.

The reason for this is as follows:

We average about 1000 hourly bookings per year - \$5000 p.a. income.

Half of this (\$2500) goes to a reserve for resurfacing the court every 10 years or so.

Prices for electricity (security lights, anti-cockatoo etc) have been rising each year.

Maintenance (locks, net repairs, high fence repairs for rust, damage etc) is a continual expense.

\*Last year, we spent \$1500 replacing 4 wires on the fence!

Council is increasing the rental for the court to \$500 p.a. within the next two years.

Vandalism this year has cost almost \$2000.

All these expenses mean that the Community Association is increasingly responsible for expenses, beyond the income that the court can provide.

We also recognise the role of Wagstaffe Store, unpaid, in supporting the court via bookings, collection of fees etc.

Some feel that the charge (\$5 per hour) should be maintained because it encourages young people (and older players) to maintain fitness by enabling inexpensive use of the court. Others feel that players could contribute more to the upkeep of the court.

We anticipate discussing this issue at the Association meeting in July.

If you have any thought/opinions about this matter, please come to the July Meeting and have your say!!!!

Alex Sharp

## NEWS of the ZAPPER

Four years ago the tennis court Zapper that charges the two wires that run around the top of the tennis court stopped working. By the time we realised what had happened the White Cockatoos had plucked the white strands from the court surface, and the end result was a \$25,000 new court surface.

So two years ago we put in a special flashing light in the shed that shows the zapping going on. Unfortunately about three weeks ago a bird twisted the court wires and this stopped the zapping, and a potential problem was that failure was not reported as requested in a notice in the shed under the warning light.

Luckily it is not nesting time so a quick repair was in time to prevent damage. A new surface now will cost closer to \$30,000 so we ask all tennis players to glance each time at the flashing light and if it is not working please immediately let the Waggy Store know and or ring the phone number on the notice.

Graeme Anderson

## Fitness is Moving!! *(a tongue in cheek heading perhaps??)*

After many years of hard work, the fitness project is moving to fruition. Council has agreed, after long discussions, that we can use the Australian made and guaranteed equipment and that the location in Turo Park, between the pirate ship and swings, is acceptable.

In addition, at the WTKCA meeting on Monday 8 May, it was agreed also that we should locate additional fitness equipment in the area adjacent to the Killcare Beach car park on the Surf Club side, giving all residents easy access to the equipment. So now we're on the move! Council will carry out some community engagement and environmental checks on the Killcare location, and meanwhile, we're hoping that all of the requirements can move quickly.

Here's hoping, and we'll keep you posted.

Peta Colebatch

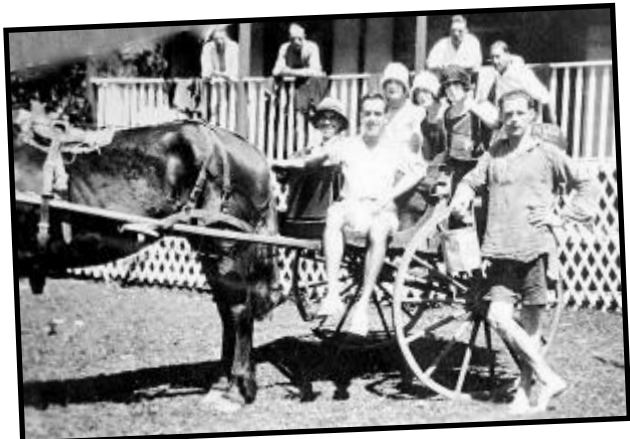


## "Bouddi Photos Past and Present"

The collection of local, historical photographs is now on the internet site "Flickr". Search "Bouddi Photos Flickr" with your search engine and select 'Albums' and you will have the pleasure of looking at the many, many, many photographs that have been donated to make up the Bouddi Collection of Photographs. Alternatively click the link on The Bouddi Society website home page.

Here is our history in pictures. It all started a decade ago. There was a day in May 2007, when thanks to David Dufty, the Bouddi History Project was launched at Wagstaffe Hall. Many people responded to the call and brought themselves and their photographs to the hall. An interesting program of entertaining items followed. Meanwhile the photos were scanned and that was the beginning of the collection. The people present (and many others) were invited to write and submit their stories and along came more photos. Over the years and from many different sources, the photos have accumulated. Famous events, famous people, local organisations and institutions are all represented. And ordinary people too.

There are many family collections included in the collection. It is worth having a look.







## WTKCA CONTACTS

**President:***Peta Colebatch***Vice President:***Alex Sharp***Secretary:***Ian Bull - 0419 833 945*[sec@wagstaffetokillcare.org.au](mailto:sec@wagstaffetokillcare.org.au)**Treasurer:***Brent Walker***Membership Secretary:***Bruce Fraser***Hall Bookings:** 0490 403 822*Helen Ferguson***Public Officer:** *Fay Gunther***Newsletter:** *Alex Sharp*[tt@wagstaffetokillcare.org.au](mailto:tt@wagstaffetokillcare.org.au)

(Please note: PDFs not reliable for TT)

[www.wagstaffetokillcare.org.au](http://www.wagstaffetokillcare.org.au)

Support for Cancer Council & World Vision

How generous are the people of our local community!

Over the last two months, Hardys Bay Community Church has hosted two community events to raise funds.

A total of \$2,359 was raised through the Easter Holiday Festival, which went to World Vision's global Water And Sanitation Hygiene program [WASH].

On Friday 19 May, the church hosted the Cancer Council's Biggest Morning Tea, which raised \$1,208.

HBCC would like to thank the caring people who supported these events.

Our usual program of events continues:

### June at HBCC

"Serving our community"

Regular mid-week activities continue

Wed 14th: Killy Cares First Aid training  
9.30-1.00pm

Our Sunday series:

*Jesus Christ, what a role model*

- every Sunday 9.30am

Half-yearly members' business meeting:  
Sunday 25th at 11am

Fifty-up: every Friday, 10.30-12noon,  
all welcome for a cuppa, activities  
& outings

For enquiries, hall hire and pastoral support, phone the church office: 4360 1293

Pastor: Dr Stephen Hinks

[www.hbcc.com.au](http://www.hbcc.com.au)

## MOBILE LIBRARY

The Gosford City Library's

Mobile Library Van visits

Wagstaffe

fortnightly on Wednesdays!

June 7 & 21 How to remember  
which day?

**CORRECTION!**

It follows the YELLOW  
bin collection



## Knit 2 Chat 2

All knitters made welcome  
at Wagstaffe Hall from  
1.30 until 4pm  
on the 2nd & 4th Tuesday  
in the month

June 6 & 20

Helen 4360 2926

**MAH JONG AT WAGSTAFFE HALL**

**on Thursday afternoons**

**from 2.00-5.00 pm**

**Please join us**

**— call Heather 4360 2178**

The Association has a proud history of promoting everything good about the unique character of the Bouddi Peninsula – the environment, the village character and the sense of community. Please consider joining us by completing the form below. (Note: Current Members will be advised when renewals are due). Form is for New Members only: By signing this form you agree to uphold the Association's Aims and Objectives [find at [www.wagstaffetokillcare.org.au](http://www.wagstaffetokillcare.org.au) or contact WTKCA for a copy or further information]. (1) Complete this form (2) Enclose payment of \$5p.p. [includes joining fee] (3) List details in spaces provided (4) Sign this form and return to WTKCA Membership Secretary, PO Box 4069 WAGSTAFFE NSW 2257.

FULL NAME of new member/s [use BLOCK letters].....

Mailing address.....

Email address.....

Phone/s.....Signed.....