



TALKING TURKEY

MONTHLY NEWSLETTER OF THE WAGSTAFFE TO KILLCARE COMMUNITY ASSOCIATION INC

No 153 October 2015 Page 1

**NEXT
WTKCA MEETING WILL BE
held on
Monday
OCTOBER 12th at 7.30 pm
Wagstaffe Hall
followed by supper
All welcome**

OCTOBER AT THE HALL

**For bookings call
0459 152 642**

*Monday

9.30-11.00 Yoga with Gai 4360 1854

3.30-4.30pm Karate with Greg
greg@gregvanborssum.com

6.00-7.00pm Pilates 4384 5005

12th WTKCA meeting 7.30pm

*Tuesday

9 & 11.30 Tai-Chi with
Alain Bianchini 0422 795 365

1.30-4.00pm Knit & Chat 4360 2926

4.30-6.00pm Karate with Greg (see
above)

*Wednesday

3.30-4.30pm Karate with Greg
6.00-7.00 pm Clinical Pilates with
Jo Frize 4360 2707 – Booking & by
term

7.00- 8.00 pm Labor Party - Jim
MacFadyen (first Wednesday of
the month - 7th October)

*Thursday

9.15-10.15 Clinical Pilates – with Jo
Frize -Booking & by term 4360 2707

2.00-5.00 pm Mahjong 4360 2178

5.15 - 6.15 pm Karate with Greg
(see above)

7.30-8.30pm Adult Karate with
Greg

*Friday

9.30-11.30 Yoga with
Laurie Jones 0423 589 877
s1.30-4.30pm Old Wags Bridge
Group 4360 1612 - (not 4th Friday)

4th Friday - 23 October
South Bouddi Friendship Group
1.30-5.00pm Ken Yates - 4360 2332

Report on NBN Information Session – 3 Sept 2015

Our Federal MP, Lucy Wicks' 'held a 'Listening Post' at the Hardys Bay Club on Thursday 3 September, essentially to provide information and answer questions on the NBN rollout. Lucy was assisted by an NBN representative and by local Councillor Deanna Bocking.

The session began with a refreshingly frank admission by Lucy that problems with existing delivery of broadband (ADSL) has been a bugbear in many parts of this peninsula, mentioning Killcare, Hardys Bay, Wagstaffe as well as Empire Bay and Bensville.

The NBN rollout was explained in detail –

- Five nodes have already been installed to cover our area. The locations being – Pretty Beach Rd near the intersection with High View Rd/Wagstaffe Ave, Araluen Dr adjacent to the Telephone Exchange, Araluen Dr adjacent to Killcare Cellars, Stewart St new Wards Hill Rd and at the intersection of The Scenic Rd and the eastern end of Manly View Rd.
- Each node will supply 3-400 premises via the existing copper wire phone lines
- The Government has tasked NBN Co. that 90% of connections within each node's area must achieve a download speed of 50Mbps and that 100% must achieve 25Mbps.
- NBN Co. will be actively testing connections during the rollout and where the existing copper lines cannot deliver 25Mbps NBN will, at their cost, do whatever is necessary to achieve this speed, i.e. renew the copper wires OR install additional nodes or mini-nodes OR replace the copper with fibre to the home. Which option is used will be a decision by NBN Co.
- Where low speed is caused by internal wiring in the premises they may be able to improve performance by techniques such as installing a central splitter.

Telstra's copper landline network has been sold to NBN Co. The NBN service is scheduled to be switched on in this area in February 2016. Landline subscribers will be required to switch to one of the many NBN service providers over the succeeding eighteen months at which point the old landline service will be turned off.

The NBN internet delivery speed capability at any given premise will range from the guaranteed minimum of 25Mbps up to 100Mbps.

Service plans which will be offered by providers are -

- 12Mbps down/1 Mbps up – this is the base rate – available to all subscribers.
- 25 Mbps down/5 Mbps up – available to all subscribers.
- 50 Mbps down/25 Mbps up – available to subscribers whose line has tested capable of this speed.
- 100 Mbps down/40 Mbps up – available to subscribers whose line has tested capable of this speed.

Connections which peak at the minimum 25 Mbps rate may subscribe for either the 12 or 25 Mbps options but not for 50 or 100Mbps.

Some queries were taken on notice and we will distribute new information when received.

PLEASE let us know when YOUR line is tested!

Hope for Long Suffering Mobile Users?

Lucy offered a glimmer of hope, brought on by poor mobile reception during the meeting!

She advised she has tried to get this area included in the Federal Black Spot Program but was told we didn't qualify as the program excludes 'metropolitan' regions.

Lucy pledged to continue to lobby the Minister for Communications and explain the challenges of mobile communications in this area.

We encourage you to add your voice to those pleas!

Email - Minister.Fifield@dss.gov.au & copy Lucy.Wicks.MP@aph.gov.au

Ian Bull

**FREE HEALTH ADVICE** (Part 2—Part 1 can be found in the August issue)

National Health Call Centre Network (the Network) trading as Healthdirect Australia, provides all Australians with access to trusted professional health information and advice accessed through innovative telecommunications and information technologies. Services provided by the Network include:

1. **Healthdirect Australia** (1800 022 222, www.healthdirect.gov.au) - commenced operation in July 2007 as a 24/7 telephone-based nurse triage, information and advice service operating in all states and territories, with the exception of Queensland and Victoria, which operate state specific services. **Healthdirect Australia** has handled over 5.5 million calls since its inception. In 2014-15, the service responded to over 660,000 incoming calls – of which approximately 50% came from NSW residents.
2. Online **National Health Services Directory (NHSD)** www.nhsd.com.au - a web based directory that is available online and has free smartphone applications on Apple and Android. It provides consumers and health practitioners with access to accurate and current service provider information such as location, opening hours and telephone numbers for general practices, pharmacies, hospitals and emergency departments. Information for psychology, occupational therapy, speech pathology, physical therapy and dental services is now also being collected and collated. In the 18 months from July 2012 to 31 December 2014, the **NHSD** database received over 2.5 million page views and there were over 8,200 downloads of the mobile application.
3. **Online Symptom Checker** (www.healthdirect.gov.au). Feeling unwell and not sure what to do? You can find trusted health information about causes, treatments and prevention for a broad range of symptoms by going online and visiting the **healthdirect** website www.healthdirect.gov.au. Symptoms addressed on the website include, for example, back pain, bruises, diarrhoea, fever, joint pain, sore throat and more. You can also use the **Symptom Checker** for advice on what to do next, or to browse the A-Z index for more health topics.

Best of all, it is a free service!

'HORIZONS AT KILLCARE' OFFICIALLY OPENED

The gala opening of the Horizons at Killcare Gallery of Art was held at the Killcare Surf Life Saving Club (SLSC) on Saturday 12th September and was an outstanding success. Over 90 people attended the event which was deliciously catered for by Horizons at Killcare. All present were highly complimentary of the work on display and some outstanding sales were achieved. Entertainment was provided by local ensemble "Peter Brashe and Lorant" whose gentle music created a wonderful atmosphere.

Gallery manager Brendon Weston thanked all present for attending and also his wife Jude for her continuing outstanding efforts. Barrie and Amanda Gibson of Horizons were also thanked for their support both morally and financially Brendon went on to say that without the Gibsons the gallery simply would not be possible, they have always supported the SLSC and deserve support from the community in return. Other notable people who have assisted with the opening night were also thanked, including Dale Montgomery, Joy Park, Paul and Wendy Kelly, Malcolm and Yvonne McCall, and John and Christine Woulfe. Cathy Baker from Belle Property, a major sponsor of the Gallery, then graciously declared the venue officially open.

Brendon Weston

**CLARET ASH REPLACES WHITE CEDAR AT WAGSTAFFE HALL**

The white cedar, removed earlier this year due to its diseased state, has finally been replaced in the park alongside Wagstaffe Hall with the communities' choice of a Claret Ash tree. It is a deciduous tree which will provide shade in summer and warmth in the winter for those community members who continue to enjoy the facility. A big thank you to Duane Norris who greatly assisted in securing the best possible outcome for the Association.

NPWS RESPONDS QUICKLY TO ILLEGAL LOBSTER BEACH FIRE

Around 10pm on 29 August, residents living above Lobster Beach observed a group of young men on the southern end of the beach apparently having a party after lighting a camp fire close by. After making a 000 call, the resident went down and advised the group that fires were not allowed in that area. The revellers then advised that they quite often do this after accessing the beach by boat. The lighting of fires is of major concern for this area. Many of the local community still recall, with horror, the 2012 bush fires which started after a similar fire was lit on Lobster Beach and a prevailing westerly wind whipped it into a frightening firestorm which threatened to envelope the entire peninsular. Fortunately, this time the wind, while quite strong, was coming from the south-west.

When 000 calls relate to fires in our RFS district, 3 Brigades are generally paged to attend, regardless of whether it is a campfire on the beach or a house fire, and so three brigades did attend this one. The Empire Bay Brigade was first on the scene and walked to the beach by way of the Lobster Beach track – this would not have been easy carrying all the gear required to attend to the fire. The Killcare and MacMasters brigades also attended, with one making its way along Hawke Head Drive as a precaution. The lighting of fires, with the exception of planned hazard reduction burns, is not permitted in Bouddi National Park and signs to this effect already exist on the Lobster Beach walking track. However, these are not visible to park users who access the beach by boat. In response to the concerns raised by the vigilant local resident who initially raised the emergency, National Parks and Wildlife Service (NPWS) have advised that it will install high visibility regulatory signs on the Beach advising of the restrictions and subsequent penalties of lighting illegal fires. NPWS also plans to highlight this issue through a pre-fire season media release to local newspapers and community newsletters.

Appreciation is extended to the quick action by the resident who alerted authorities to the fire and to the Brigades and NPWS for responding in such a timely and positive way to her concerns.



WEEDING TECHNIQUES – Part 2

The Wagstaffe Ridge weeding project part-funded by Local Land Services is using these techniques to weed the 9 big properties along the ridge, between suburban Wagstaffe and Pretty Beach, and Bouddi National Park. Part 1 can be found in the August issue of Talking Turkey.

Cinnamomum camphora – Camphor Laurel. Native to China and Japan this plant grows up to 20 metres. Seeds are spread by birds. Hand pull seedlings. Scrape and paint young plants with green stems with 100% glyphosate. Frill larger plants – with 100% glyphosate. If tree is cut down scrape and paint regrowth stems.

Chrysanthemoides monilifera – Bitou Bush. Native of South Africa – yellow flowers and black berries which are spread by birds and foxes. A weed of National Significance. Hand pull seedlings. Cut and paint larger plants with 100% glyphosate.

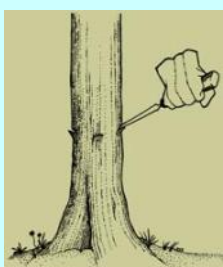
Polygala myrtifolia – African Scurf Pea. A native of South Africa a shrub to 2 metres with pink pea shaped flowers. Spread by water, ants and birds - up to 2000 seedlings per square metre. Pulls out very easily. Very large plants can be cut and painted with 100% Glyphosate.

Acacia saligna – Golden Wreath Wattle. A native of Western Australia, this wattle is highly invasive in native bush. A large shrub, tree 3-8m high. Flowers in spring with large leaves. Cut and paint with 100% glyphosate. Larger plants – frill and treat with 100% glyphosate

Rubus fruticosus- Blackberry. A native of Europe – a scrambling shrub up to 3m. Flowers early spring. Scrape and paint stems with 100% glyphosate. Dig out. Spray with 1% Garlon at flowering.

Ipomea indica- Morning Glory. A native of West Indies and tropical Asia. A climber with purple trumpet flowers. Hand pull, scrape stem. Spray 1% glyphosate.

Zantedeschia aethiopica- Arum Lilly. A native of South Africa. Spreads vegetatively. Dig out – and remove all underground structures.



Frill – chisel around plant base 2cms apart apply herbicide immediately.

Cut and Paint



Stem scrape – with blade, scrape stem from base up to 20cm – apply herbicide to entire scrape area.

Deb Holloman

“KILLY CARES” FUNDRAISER

Due to renovations at Hardys Bistro, the new venue for our annual fundraising event on

22 October
will be

Horizons Café

81 Beach Road Killcare

The cost will be
\$50.00 per head
(2-course dinner),
BYO, no corkage.

To make a reservation
please call

Jenni Bourchier
0411 198 483
or Brent Walker
0412 411 496.

WAGGY UNPLUGGED SATURDAY
24 OCT
7:30PM

LIVE MUSIC COMMUNITY EVENT

VENUE: WAGSTAFFE HALL WAGSTAFFE AVE
SUPPORTED BY THE WAGSTAFFE TO KILLCARE
COMMUNITY ASSOCIATION & THE BOUDDI SOCIETY
ALL PROFITS GOING TO CHARITY

TANGELOES

(vibrant acapella group)

ZOE McDONALD (singer)

local band to finish the night

Evening hosted by

LOCO VOCO

Acapella group

\$15 DONATION | TABLES AVAILABLE.
KIDS \$5 | BYO DRINK & NIBBLES
TICKETS AT THE DOOR OR WAGSTAFFE STORE

NPWS INCREASES ENTRY AND CAMPING FEES

The National Parks and Wildlife Service (NPWS) is increasing fees from 6 October 2015, in those National Parks where fees currently apply. Daily vehicle entry fees will increase by \$1 per day and camping fees are increasing between 50 cents and \$3.50 per day, depending on the classification applicable to each campground. Annual pass products are not part of the latest increases, and continue to be a cost effective option for regular park users.

More information can be found at –
www.nationalparks.nsw.gov.au/passes-and-fees

HORIZONS AT KILLCARE

The terrible storms that hit the Central Coast earlier this year, virtually destroyed the restaurant on the upper level of the Killcare Surf Life Saving Club. Since that time Amanda and Barrie, owners of the restaurant, have been operating from the adjacent function room at the club. Finally, repairs and renovations are complete, and the newly decorated “Horizons at Killcare” restaurant has moved back into its original premises and once again deliciously prepared meals by Head Chef Bradley Hickey can be enjoyed along with the spectacular views offered by the venue. A successful ‘Degustation Dinner’ was held last May and another is planned for November.

LIFE WRITING COURSE

The 2015 Life Writing Course is for people who are ready to put onto paper the unique story of their life and times. The dates have now been finalised:

***Sunday 18 October:** all day session.

***Monday, Tuesday, Wednesday, Thursday, Friday – 19-23 October:** 9.30-1.30 each day.

***Sunday 25 October:** open ended session, to select and organise material so it's camera-ready for putting into book form.

For more details and to reserve a place (maximum group size is 8), phone **0422 000 674** or email: helenmenzies@bigpond.com

**HARDY'S BAY CLUB
OCTOBER****SATURDAY 3 OCTOBER**

1pm: AFL Grand Final

7pm: Two-Buck Blues Band + Special Guests

SUNDAY 4 OCTOBER *

2pm: Mañana

7pm: NRL Grand Final

PUBLIC HOLIDAY MONDAY 5 OCTOBER

Open for lunch and dinner from 12pm

SATURDAY 10 OCTOBERSpring Party with local favourites,
Big Yellow Moon Band live from 7pm**SATURDAY 17 OCTOBER**Oktoberfest! In association with Coopers
Brewery. German beers, German food, Drift-
wood live from 7pm**SATURDAY 24 OCTOBER**

7pm: The Moods

FRIDAY 30 OCTOBER4-6pm Kid's Halloween Party –
jumping castle – party host – games – face
painting – balloon twisting – heaps of
lollies!**SUNDAY JAM**

Every Sunday from 3pm

*please note: no Jam on Sunday 4 October

WTKCA CONTACTS**President:***Peta Colebatch***Vice President:***Bill Gregor***Secretary:***Ian Bull -*

4360 2945

sec@wagstaffetokillcare.org.au

Treasurer:*Brent Walker***Membership Secretary:***Bruce Fraser***Hall Bookings:***Jon Mason 0459 152 642***Public Officer:** *Fay Gunther***Newsletter:** *Helen Ferguson*

tt@wagstaffetokillcare.org.au

(Please note: **PDFs not accepted**)**Webmaster:** *Vanessa Simpson*www.wagstaffetokillcare.org.au**PRETTY BEACH PUBLIC SCHOOL**

The auditions began back in April and the children have been hard at work ever since. Supporting this wonderful group of children is an extensive and talented



group of volunteers from the broader school community.

Parents, grandparents, brothers, sisters,

friends and teachers have been incredibly generous donating their time and skills both front and back of house. Music, direction, choreography, costumes, sets, props, the list goes on. Opening night will see the culmination of hundreds of hours of work in a very spectacular fashion. Anyone interested in attending the world premiere of *The Musical* should contact Pretty Beach Public School on 4360 1012.

**Our aim is to serve our community****Dates for your diary:**

* Thanksgiving & prayer for Surf Club
& Firies – Sunday 11 October.

* Christmas Dinner (free) - Saturday
5 December

* Carols by Waterfront - Sunday
20 December.

* Church Services: 9.30am

Church Office: 4360 1293

Hall hire: 4360 1492

Pastor: Stephen Hinks Pastor:
M:0439 744 657

WAGGIE STORE NEWS

After a short break over winter, wood fired pizzas are back 1st and 3rd Friday of every month starting 25th September from 5.00 till 8.30pm. We have fresh bunches of flowers delivered every Friday morning to the store; orders in by 3pm Thursdays for something special. Great news – the store was mentioned in the Good Food Guide 2016 for its big burgers and Keron appreciated all the good wishes she received after her Rotary Club award. Without our fantastic local community this award would not have happened, so thank you!



**SUNDAY
4 OCTOBER
9AM-2PM**

After the massive effort by our lovely parent community made our recent markets such a vibrant success, preparations are well underway again for yet another wonderful community event. Stall bookings have commenced with quite a number of new stalls on the waitlist. Exciting new food options are being trialled in our families' kitchens for the P&C food stalls. And the entertainment team has amazing talent in the pipeline for that lovely relaxed vibe. All made possible solely by parents and community members generously volunteering their time.

The Association has a proud history of promoting everything good about the unique character of the Bouddi Peninsula – the environment, the village character and the sense of community. Please consider joining us by completing the form below. **(Note: Current Members will be advised when renewals are due.)**
Form is for New Members only: By signing this form you agree to uphold the Association's Aims and Objectives [find at www.wagstaffetokillcare.org.au or mail WTKCA for a copy or further information]
(1) Complete this form **(2) Enclose** payment of \$5 [includes joining fee] **(3) List** your details in space provided
(4) Sign this form and return to **WTKCA Membership Secretary, PO Box 4069 WAGSTAFFE NSW 2257.**

FULL NAME of new member [use BLOCK letters].....
Mailing address.....

Email address.....

Phone/s.....Signed.....