



# TALKING TURKEY

MONTHLY NEWSLETTER OF THE WAGSTAFFE TO KILLCARE COMMUNITY ASSOCIATION INC

No 156 February 2016 page 1

**NEXT  
WTKCA MEETING  
will be held on  
Monday  
February 8 at 7.30 pm  
Wagstaffe Hall  
Meeting followed by  
supper  
All welcome !**

**AUSTRALIA DAY  
2016**

**at WAGSTAFFE**

**THIS  
PICTURE  
SAYS  
IT**



## **FEBRUARY AT THE HALL**

**For bookings call  
0459 152 642**

### **\*Monday**

**9.30-11.00 Yoga with Gai  
4360 1854**

**6.00-7.00pm Pilates 4384 5005**

**8th WTKCA meeting 7.30pm**

### **\*Tuesday**

**9 & 11.30 Tai-Chi with  
Alain Bianchini 0422 795 365**

**6.30pm Shower Singers with  
Melinda Schneider  
[management@melindaschneider.com](mailto:management@melindaschneider.com)**

### **\*Wednesday**

**6.00-7.00 pm Clinical Pilates  
with Jo Frize — Booking & by  
term 4360 2707**

**7.00- 8.00 pm Labor Party -  
Jim MacFadyen (first  
Wednesday of the month - 3rd  
February)**

### **\*Thursday**

**9.15-10.15 Clinical Pilates —  
with Jo Frize — Booking & by  
term 4360 2707**

**2.00-5.00 pm Mahjong  
4360 2178**

### **\*Friday**

**9.30-11.30 Yoga with  
Laurie Jones 0423 589 877**

**1.30-4.30pm Old Wags  
Bridge Group 4360 1612**

We had great weather and a great turnout to the Australia Day breakfast at Wagstaffe Square. So thank you everyone, and particular thanks to the myriad helpers and unsung heroes who make it all possible, with their great effort in cooking behind the scenes, at the BBQ, cleaning, serving, fetching and arranging chairs, filling bottles with greenery and then emptying them all again, sweeping, decorating, and cleaning up, and also to our great MC, our singer, our poet and speaker, with everything capably managed by Jeanette Martin and Fay Gunther.

And everyone helps with such good spirit and calm efficiency - the furies calmly collecting chairs and returning them to the tennis courts, a first aid station present at the furies truck, the egg cookers in the kitchen missing out on all the festivities but never complaining, and the friendly helpers who wash up afterwards and those who sweep. We are all so fortunate to live in such a helping community.

So thank you all, and same time, same place next year!!!

Peta Colebatch

## **SENIORS PLAYGROUND BENEFITS ALL AGES**

Last month we outlined a proposal to install fitness equipment for Seniors in a small area that is shielded by trees near the entrance to the Pretty Beach end of the dog track. We have received a lot of positive comment and some adverse comment to which we are responding.

In support: as our senior population ages, it is a long way or even impossible to get to Ettalong, Woy Woy Etc to find equipment, and just as we have local play equipment for children, the oldies also deserve an area that is easily accessible locally. Throughout NSW many Councils are now installing parks with multiple usage. Yes, defining who is older can be pretty broad: there are many others in the community of varying ages who could also benefit.

Bouddi Peninsular residents are encouraged to come to our meetings at Wagstaffe Hall on the second Monday in February and March to join in the discussions on this proposal.

## **TRASH 'N' TREASURE - Super Early this year!**

**Easter Saturday 26 March — Get into de-cluttering mode NOW!**

This major event is totally dependent on community - YOUR - generosity. Please help us make this a success - keep hold of anything you think might be of interest to someone else, that you might otherwise have thrown or given away.

We accept all manner of things but please NO clothes, large heavy furniture, beds & no dog-eared or discoloured books (classics excepted!).

If anyone has some garage space they could lend us leading up to the event to help us start collecting, please let us know. We need volunteers to help set up on the Friday & on the day.

This is always a fun event with all money raised going back into the local community.

Contact: Ian on 4360 2945 or email [sec@wagstaffetokillcare.org.au](mailto:sec@wagstaffetokillcare.org.au)



## PRETTY BEACH BUSHCARE

The Pretty Beach Bushcare group meets every Monday from 2:00pm to 4:00pm to pull weeds and plant native tube stock. The meeting place is the Boat Ramp end of the Dog Track.

The group of volunteers is well-supported by Gosford City Council's Bushcare Officers who provide tools, plants, mulch, professional teams to assist and expertise supplied by a supervisor who works with us once a month.

It is a small friendly group and newcomers are very welcome. No experience is necessary and you will learn about native plants and how to identify and eradicate weeds. Any time you can give will help to rescue the native vegetation that supports the local wild life. The work is very relaxing and very rewarding. The community appreciates the improvements made.

For more information contact Gosford City Council's Bushcare Officer on 4325 8222 or Robyn Warburton on 0416 069 311

## The Good, The Bad and The Ugly of Bushcare on the Dog Track

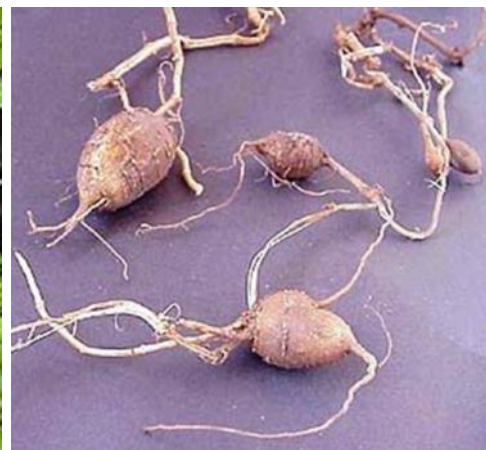
**The Good:** If you walk along the 'Dog Track' (the popular walkway that links Pretty Beach and Hardys Bay) you may notice a dense patch of green leafy ground cover at the beginning of the track and half way along on the water side. This plant is *Tetragonia Tetragonoides* more commonly known as **Warrigal Greens**, a native spinach.

It is an indigenous plant that grows along the eastern coast of Australia. The bright green leaves of the plant are 3–15 cm long, triangular in shape and it has a tiny yellow flower. Warrigal greens were eaten by



Captain Cook and sustained many convicts.

**The Bad:** The other trailing plant growing along the track is *Acetosa sagittata* known as **Turkey Rhubarb**. It is a native of South Africa. The bright green leaves are arrowhead shaped and have a sharp lemony tang. Many underground tubers form as a series of small 'potatoes' linked by thin strands. This plant is a prolific seeder and regenerates from tubers if top growth is removed. Seeds often germinate under other vegetation and the plant then climbs to reach light, smothering any supporting native plants.



**And The Ugly...** Scattered all the way along the track is *Bidens pilosa* commonly known as **Cobbler's Peg** or **Farmers Friends**. This weed is detested by every Bushcare volunteer and home gardener. There is nothing attractive about this weed. It is native to the Americas and is an erect densely hairy woody plant with a branching habit to about 1m high. It has a small yellow flower and the seeds are black, about 1cm long, with 2 or 3 barbed awns at the tip. These burrs adhere to clothing, shoes, pet fur and skin. It is also a prolific seeder and will rapidly spread, dominating areas and squeezing out the native plants.







## RENOWNED BRIDGE TEACHER TO VISIT WAGSTAFFE HALL



The Old Wags Bridge Group is pleased to announce that John Roberts, a Bridge Teacher located in Sydney, will visit Wagstaffe Hall on 18th March, and give 32 lucky students of the game a two hour lesson. The subject is yet to be identified. However, if John's instruction 12 months ago at Wagstaffe Hall is any guide, the lesson is sure to provide new ideas and enlarge the mind. Cost will be \$22 per head with afternoon tea to follow, and definitely limited to 32 players. Anyone interested in reserving a spot should telephone Helen (02 4360 1820) or Ann (02 4360 1612). More information will be available in the March issue of Talking Turkey.



*Has the time come for you to write and publish the unique story of your life and times?*

**Enrol now for this Autumn's one week Life Writing Course.**

No previous writing experience is needed – just a wish to capture your own story and get it ready for print; and a commitment to give up one whole week to make it happen. The course will run in Wagstaffe, each morning from Sunday 10 April to Sunday 17 April.

To reserve a place (maximum group size is 8), or for more details, email: [helenmenzies@bigpond.com](mailto:helenmenzies@bigpond.com)  
or call: 0422 000 674



## KILLCARE FIRIES ANNUAL RECRUITMENT DRIVE

Killcare Wagstaffe Rural Fire Brigade is looking to expand its membership. We are looking for men and women who live in the local area and would like to help their local community.

**An information evening will be held**

**at Killcare Fire Station, Stanley St Killcare**

**on Tuesday 16 February at 7.30pm for anyone interested in joining the Brigade .**

**or for more information contact Michelle Biddulph on 4360 2483 or email**

**[killcarerfb@gmail.com](mailto:killcarerfb@gmail.com)**

## TAB RETURNING TO HARDYS BAY CLUB

Three years after it was removed, the TAB facility will be reinstated at the Hardys Bay Club. Construction began in early January on a separate TAB room attached to the main bar, and it is expected to be open and ready for bets to be placed within weeks.

The owner of the Club, Bruce Murray, said it was something the community has repeatedly asked him for and he is pleased to be able to bring it back to the club now.

This latest addition follows the recent renovation and reinstatement by the club of the courtesy bus, the building of the cubby house and the pergola area.

**HARDY'S BAY CLUB  
FEBRUARY**

**Sunday 7 February 3pm:** Jam led by Stompbox Shane

**Friday 12th Feb 8pm:** Luke O'Shea Live with Ashleigh Dallas. Tickets \$25 adults/ \$15 kids (+bf). Tickets available from Oztox.com.au or the Bistro 4360 2014

**Saturday 13th Feb 7pm:** The Moods

**Sunday 14th Feb:** Valentine's Dinner Under the Stars with Sarah Humphreys. Three course dinner \$65. Bookings 4360 2014

**Friday 20th February 7pm:** Daxton Monaghan

**Sunday 21st February 3pm:** Jam led by Bob Jackson

**Saturday 27th February 7pm:** Rewind

**Sunday 28th February 3pm:** Jam led by Top Cat 3pm

**Saturday 5th March 7pm:** Happy Hour

**Sunday 6th March 3pm:** Jam led by Stompbox Shane

**Saturday 12th March 7.30pm:** Shane Nicholson live. Tickets \$28 from Oztix or the Bistro 4360 2014

**WTKCA CONTACTS****President:**

*Peta Colebatch*

**Vice President:**

*Bill Gregor*

**Secretary:**

*Ian Bull - 4360 2945*

*sec@wagstaffetokillcare.org.au*

**Treasurer:**

*Brent Walker*

**Membership Secretary:**

*Bruce Fraser*

**Hall Bookings:**

*Jon Mason 0459 152 642*

**Public Officer:** *Fay Gunther***Newsletter:** *Helen Ferguson*

*tt@wagstaffetokillcare.org.au*

(Please note: **PDFs not accepted**)

**Webmaster:** *Vanessa Simpson*

**[www.wagstaffetokillcare.org.au](http://www.wagstaffetokillcare.org.au)**

**ART AND PHOTOGRAPHIC  
EXHIBITION***Horizons at Killcare  
Gallery of Art*

*presents a large variety of Art and Photography from a selection of the Central Coast's finest talents. Works on display cover an expansive and diverse methodology and the artists are regularly in attendance and more than happy to discuss their techniques and offer advice on what would be a suitable purchase.*

*The Art Gallery enjoys a fantastic beach vista and is open Thursday to Monday 10-3pm at Upper Level, 81 Beach Dr Killcare Beach*

telephone 0427 499 861



**Pastor: Stephen Hinks**

**Mobile:** 0439 744 657

**Church office:** 4360 1293

**Hall hire:** 4360 1492

**What a great night the Carols event was – thank you to all who came.**

**This month at HBCC: All activities resume**

**Friday Friendship from 10.30**

**Sat 6th: Locals lunch at Putty Beach – all welcome; BYO meat and something to share.**

**Sunday church at 9.30: "An inclusive and inviting community"**

**Sat 27th: Man2man – "Is Jesus a credible model for manhood?"**

**More details: [www.hbcc.com.au](http://www.hbcc.com.au)**

**Knit 2 Chat Too**

**Knitting for WRAP WITH LOVE**

**begins again at**

**Wagstaffe Hall**

**on Tuesday 8th March 1.30–4 pm**

**then on the 2<sup>nd</sup> and 4<sup>th</sup> Tuesday  
until October.**

**We use 8ply yarn, 4mm needles or  
crochet hook and thanks to donations  
we have some yarn available.**

**Google Wrap with Love for lots of  
information and patterns.**

**We look forward to your company.  
Contact Helen Reid 43602926**

The Association has a proud history of promoting everything good about the unique character of the Boudi Peninsula – the environment, the village character and the sense of community. Please consider joining us by completing the form below. (Note: Current Members will be advised when renewals are due). **Form is for New Members only:** By signing this form you agree to uphold the Association's Aims and Objectives [find at [www.wagstaffetokillcare.org.au](http://www.wagstaffetokillcare.org.au) or mail WTKCA for a copy or further information]

**(1) Complete** this form **(2) Enclose** payment of \$5 [includes joining fee] **(3) List** your details in space provided **(4) Sign** this form and return to **WTKCA Membership Secretary, PO Box 4069 WAGSTAFFE NSW 2257.**

FULL NAME of new member [use BLOCK letters].....

Mailing address.....

Email address.....

Phone/s.....Signed.....